

# SARS-CoV-2 Quick Guide

## Sample Preparation and Capsule Loading

The enclosed pipette is for multiple use and is to be used with a disposable pipette tip enclosed in the Ego Capsule. The pipette is designed to collect exactly 20 microliters ( $\mu\text{l}$ ) in the pipette tip which is equipped with a filter preventing liquid entering the pipette.

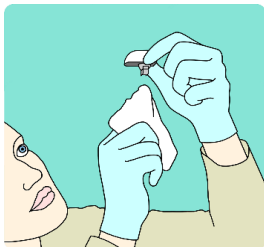
Liquid is collected in the pipette tip by pressing down the piston on the pipette and then letting it go. Same procedure is applied when delivering liquid from the pipette tip into a capsule.

### Step 1: Take out and defrost the capsule



- Remove the capsule from  $-20\text{ }^{\circ}\text{C}$  freezer and thaw at room temperature.
- Remove the capsule from the foil bag.
- Wait for 15 mins for the capsule to defrost.

### Step 2: Check for condensation



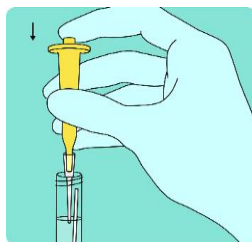
- If condensation appears, place the capsule on an absorbent material (tissue paper) and gently wipe the underpart.
- Place the capsule back in the capsule holder.

### Step 3: Apply sample ID



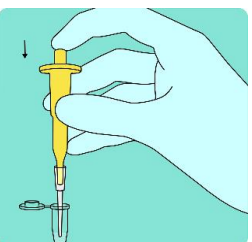
Apply the sample ID label on both, the patient sample vial and the capsule holder.

### Step 4: Collect patient sample with pipette



- Mix the patient sample vial by inversion for 15-20 times.
- Apply a pipette tip to the pipette. **OBS do not touch the pointed end of the tip.**
- Keep the pipette vertical and immerse it in the vial containing patient sample.
- Collect  $20\text{ }\mu\text{l}$  liquid by pressing on the piston and slowly letting it go.

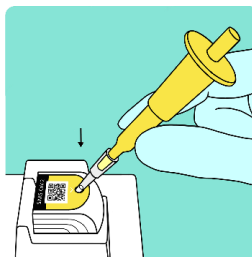
### Step 5: Transfer sample to lysis buffer and mix



- Apply the  $20\text{ }\mu\text{l}$  patient sample to the lysis buffer vial by slowly pressing the piston down.
- Mix the liquids by repeatedly pipetting up and down for at least five times.
- Pipette up  $20\text{ }\mu\text{l}$  from this lysis buffer to load into the capsule.

(Sample diluted in lysis buffer can be stored at  $15\text{-}30\text{ }^{\circ}\text{C}$  up to 6 hours or at  $2\text{-}8\text{ }^{\circ}\text{C}$  up to 32 hours).

### Step 6: Load sample in capsule

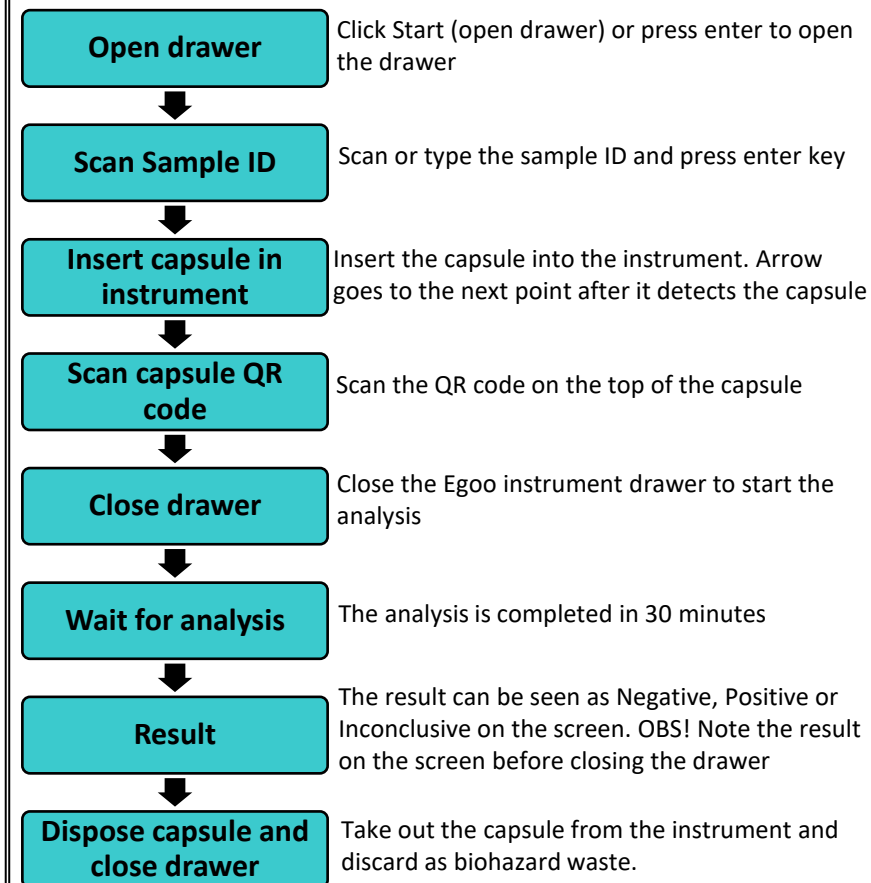


(Capsule should be run on the Ego within 15 mins after loading the sample).

- Place the tip of the pipette in the entrance hole of the capsule without touching the piston of the pipette.
- Insert the pipette tip down the entrance hole until a slight resistance is felt as the tip penetrates a membrane inside the capsule.
- Apply the  $20\text{ }\mu\text{l}$  liquid into the capsule and then remove the pipette while holding the piston down.
- Discard the pipette tip as biohazard waste.
- The capsule is now ready to be run on the Ego.

## Measurement on the Ego

- Turn on the ego instruments
- Turn on the PC and open the program Ego Clinical System
- Select tab [Instruments]
- Press [Look for Instruments]
- Select the instruments and follow the instructions to run the assay.



The instrument is now ready for the next test.